



2023 Impact Report

Community Life Church

**BUILDING ON
OUR LEGACY**



WELCOME

Greetings, Community Life Family!

It's hard to believe that after 2,000 years, the simple message of loving God and loving our neighbor is still the driving force behind the people of God. Our hope at Community Life Church is to continue this mission with our specific emphasis on Connecting People to Jesus.

In this past year, God has allowed us to be a part of growth on levels not experienced before in the history of Community Life. Thanks to you and the faithful support of others, our church has been able to impact our local community, reach out worldwide, and birth new initiatives that fulfill our mission. The year ahead is shaping up to be exciting. Knowing that this is a year of transformation means we expect that God has work he wants to do in our hearts. So, let me be the first to welcome you and thank you for allowing God to mold and shape you for his glory. I firmly believe that our ability to Connect People to Jesus is directly related to our willingness to allow God to transform our lives.

We love you and look forward to an incredible year.



Lead Pastor

Scott Veroneau

MISSION

**WHY WE DO
WHAT WE DO**

**WE LOVE GOD, LOVE OUR NEIGHBOR,
AND CONNECT PEOPLE TO JESUS.**

People

Because God values people, we value people.

Practical Faith

We value a practical faith because that is what Jesus gave us. When he summarized the law by simplifying it into the two commands of loving God and loving neighbor, it became practical, understandable, and actionable. We value a practical faith.

Connection

We value connection because the source of our faith is the Connector.

Transformation

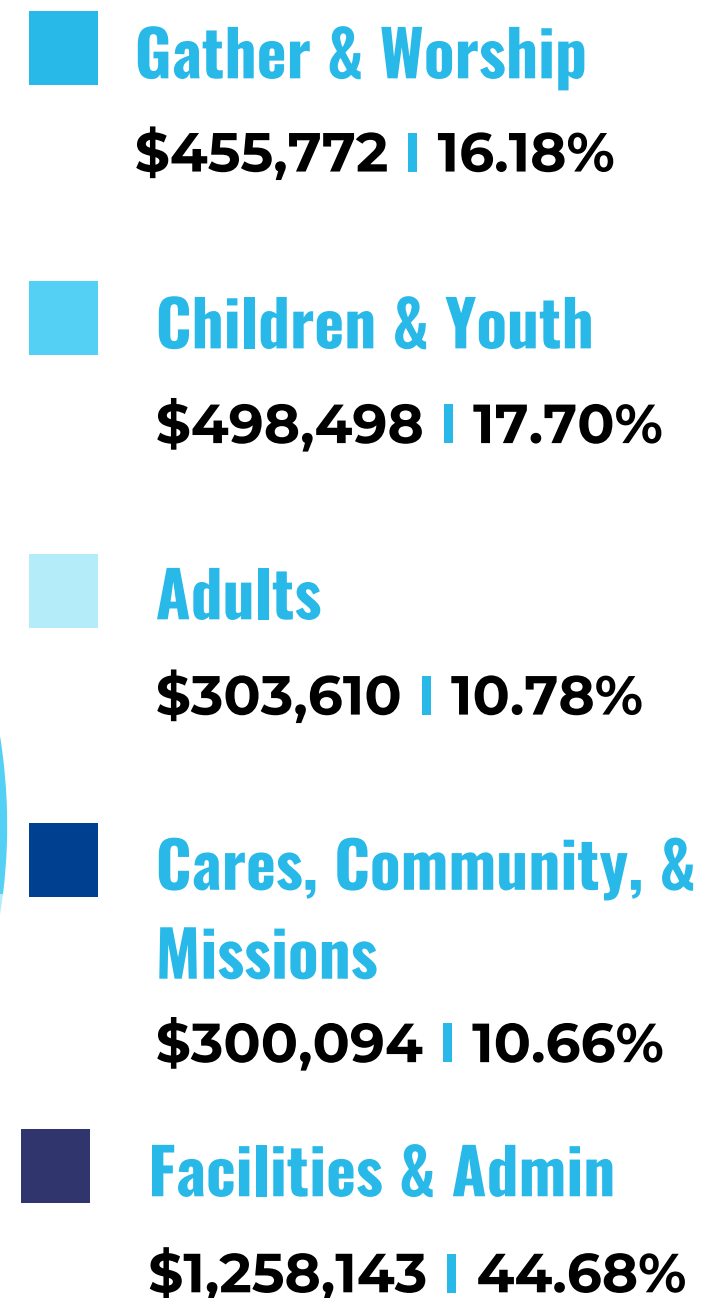
We value transformation because when you spend time in the presence of God, you are transformed.



IMPACT 2023

YOUR GIVING IN ACTION

CONNECTING TO...



Each section of the pie chart represents the funds that went into providing for each portion of ministries, including facilities expenses, pastors and staff, curriculum and programming, and other ministry resources. Dollar amounts are rounded to the nearest percentage.

2023 Impact: \$2,816,117*



2023 General Giving: \$2,405,322

2023 Directed Giving: \$331,162

*reflects directed giving from prior year spent in 2023: \$79,632

**AVERAGE SUNDAY
GATHERING**

1,125



225

**AVERAGE ONLINE
VIEWING**



BAPTISMS

224



NEW CONNECTIONS

127



NEW MEMBERS

70



KINGDOM
IMPACT

MAKE ROOM



Take Heart

For I Have
Overcome the
World

Celebrate
Recovery

2023 SERMON SERIES

[View message archives here](#)

Awestruck

THE WONDER OF BEING KNOWN BY OUR CREATOR.

BETWEEN Me

FIRST STEPS

168 attended

Our “Welcome to Church Party,” is an opportunity for those new to CLC to join us for a meal to meet our Pastors and Staff, and learn more about who we are as a church.

DISCOVERY

115 attended

Attendees meet our team, gather with others, and learn more about who we are as a church while discovering how God has designed us to fit within the church and make a difference in our world.



Stellar VBS rocketed kids on an out-of-this-world adventure full of light years of faith-building fun.

673
Children
335
Adults



HANDS ON FAITH

Students learned to put their faith in action with six science-based experiment lessons designed to illustrate the power of having faith in God.

70



**3RD GRADE
BIBLES**

18

**HOW TO USE
YOUR BIBLE**

22

Students put their faith into action by learning how to use the gift of Scripture.



**KIDS
MIN**



Top 3 in Santa Rosa
County for
Kindergarten Readiness.



Voted Best of Florida

AT THE STATE LEVEL FOR PRE-K PROGRAM



Staffed with the most
amazing, caring, and
well-qualified
teachers

We opened an
additional classroom
and doubled our
capacity for infants
to best meet the
community's needs.

We received a top-tier
evaluation rating from the
Early Learning Coalition on
a new classroom
observation tool.

EMERGE YTH MIN



SUNDAY YOUTH

70/wk



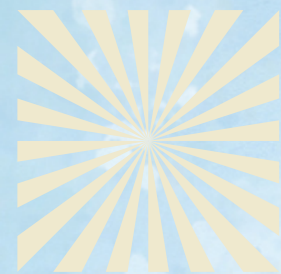
REVIVE CAMP

64



MIDWEEK

308



ENDLESS SUMMER 104



Our goal is to see all 6th – 12th grade students intentionally choose to pursue God through establishing a relationship with Jesus.

encircle life ministry

Mission: To connect people of all abilities to God in a community where they are welcomed, supported, and encouraged to grow in their faith.



34

special abilities friends
gather weekly for
fellowship & Bible
lessons

221

kings & queens
joined the special
abilities prom



1,331

volunteer hours
to care for the
encircle guests



231 adults gathered for
11 monthly outings



17 young adults meet
weekly for study &
connection



5th Thursday

a place for women to gather

553

women attended 2 worship & speaking events



52

moms of preschoolers gathered twice a month to support, care for, & encourage each other





850

Involved in Groups



17

New Leaders



91

Groups





70 benefited weekly from worship and programming

56 completed a six to nine-month step study

32 weekly volunteers helped care for the program



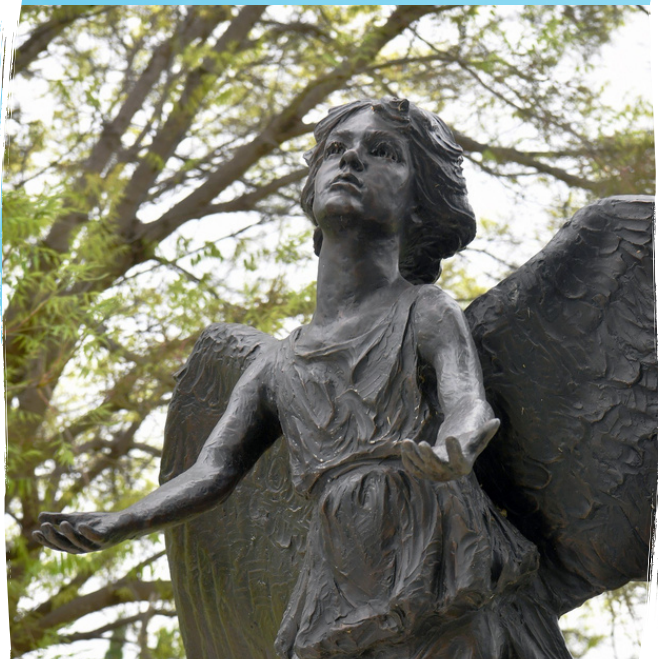


\$35,000+

Invested in assisting families through the communion fund.

500+

care ministry volunteer hours served



100+

families reached through the Angel of Hope

WE LOVE GOD, LOVE OUR NEIGHBOR, AND CONNECT PEOPLE TO JESUS.

MISSIONS

650 meals at Bright Bridge to homeless & needy neighbors

men now live in a shelter because of the painting and construction work our volunteers did

38
men

76 children receive tutoring, meals, and Christian mentors in Nicaragua every day

children attend a free Christian school in the Jungle in Honduras

230



MISSIONS SPOTLIGHT:

“His Place” Men’s Shelter at Bright Bridge Ministries in Pensacola, FL



Tyler is a recent Bright Bridge graduate now working for an electrical company in Pensacola. When asked how our shelter helped him transition to stable housing, Tyler said, “To sum it up, it was a game changer. It changed everything. I went from sleeping in the woods, in a tent, in a campsite, to having a place to lay my head, and it was warm.”

Tyler shared, “Having a stable environment puts people in a better mood and makes them want to help themselves....I did achieve what I set out for. I had a place that I could call home for a little bit, and I found a great job. I moved out (of the shelter) because I was able to.”

“Now that I have experienced the other side of the street, it means everything...It’s great knowing that I am not worried about where my next meal is coming from. It’s one of the greatest feelings to know that everything is taken care of.” Thanks to your support, Tyler, and dozens of other men, have found new life, a fresh start, and a transformational faith in Jesus at Bright Bridge Ministries.

Life on

MISSION

SERVE DAY

101

**VOLUNTERS SERVED OUR
COMMUNITY BY:**

**SHARING BOTTLES OF WATER AT
NAVARRE BEACH**

HOSTING A YOUTH CAR WASH

**BLESSING FAMILIES WITH
FREE LAUNDRY**



**BLESSING THE ARBORS NURSING HOME RESIDENTS
WITH A WORSHIP SERVICE**

**PAINTING, DOING CONSTRUCTION, AND LEADING A
DEVOTIONAL AT BRIGHT BRIDGE MEN'S SHELTER**

Facilities Upgrades



109

Worked together for
Gardens and Grounds
Day

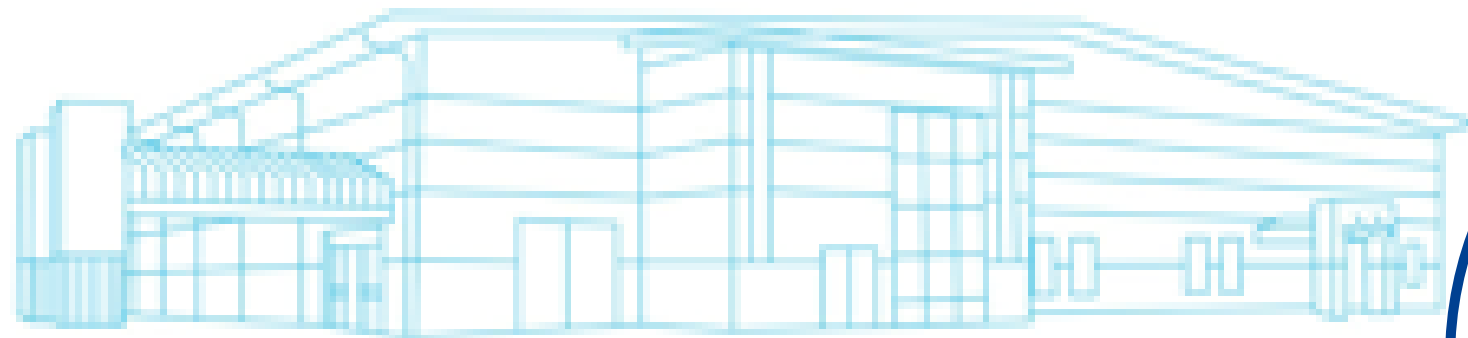
Building upgrades

New Outdoor Signage
2 AC upgrades
12 ionizers in Kids Min to
deliver cleaner air



250

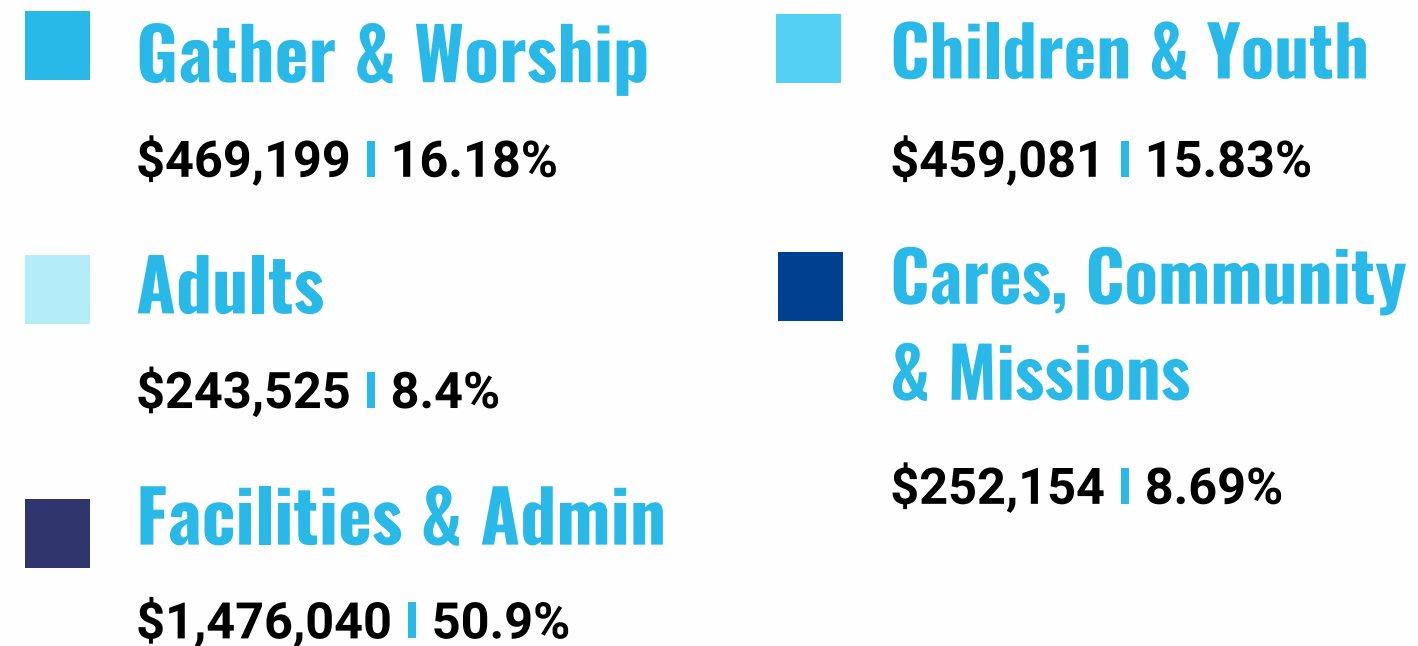
New chairs to
accommodate new
family members



STEWARDSHIP 2024 | PROPOSED BUDGET NEEDS

2024 Budget Total: \$2,899,999

CONNECTING TO...



Each section of the pie chart represents the funds that go into providing for each portion of the budget, including facilities expenses, pastors and staff, curriculum and programing and other ministry resources. Dollar amounts are rounded to the nearest percentage.

LET'S GROW TOGETHER

We Love God, love our Neighbors,
& Connect People to Jesus!





GENEROSITY

Proverbs 16: 1-3 “To humans belong the plans of the heart, but from the Lord comes the proper answer of the tongue. All a person’s ways seem pure to them, but motives are weighed by the Lord. Commit to the Lord whatever you do, and he will establish your plans.”

GET CONNECTED AT *COMMUNITY LIFE CHURCH*

There are so many ways you can get connect to CLC. Not sure how you could best serve or share your financial gifts? Reach out to info@clc.life and we can help you!



GENEROSITY



PRAY

We ask you to consider praying about your financial connection to Community Life Church. Our best plans are only effective if they coincide with God's purpose and design for our church. We believe that your time in prayer will lead you to clarity about this decision while also giving you a heart that is full of intention about what your gift will help to accomplish.

GIVE

If God moves you to give, we invite you to do so. Thank you for having the willingness to trust us with your resources and provide us with the opportunity to serve you.

QUESTIONS

If you have any questions, we would like to have the opportunity to answer your questions. Community Life is committed to being open and transparent about finances and we welcome the conversations.

MISSION

The Finance Committee of Community Life is committed to ensure that all donations are utilized to help fulfill the mission of Connecting People to Jesus. We want you to know that your resource is making Jesus known.



Community Life Church

Ways to Give

mail



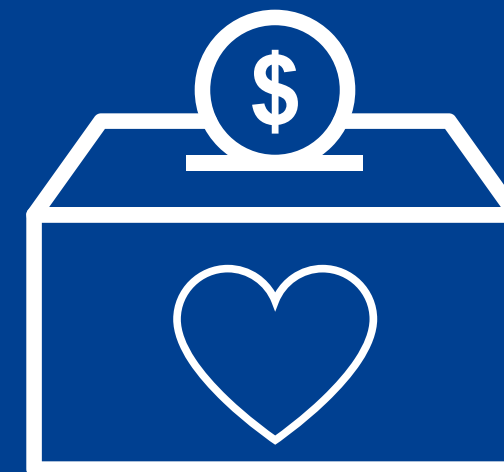
my church
center app



clc.life/give



giving boxes



www.clc.life 850.916.1660 businessadmin@clc.life